

The New ILLINET Resource Sharing Policy Directory

Kate Boyle, MLS
Resource Sharing
Manager

10/16/2009

Searching for Policies

Once library policies are entered the real fun begins

- You can search for a particular library policy
- You can search for Photocopy policies
- You can search for ILL policies
- You can search for Reciprocal Borrowing policies

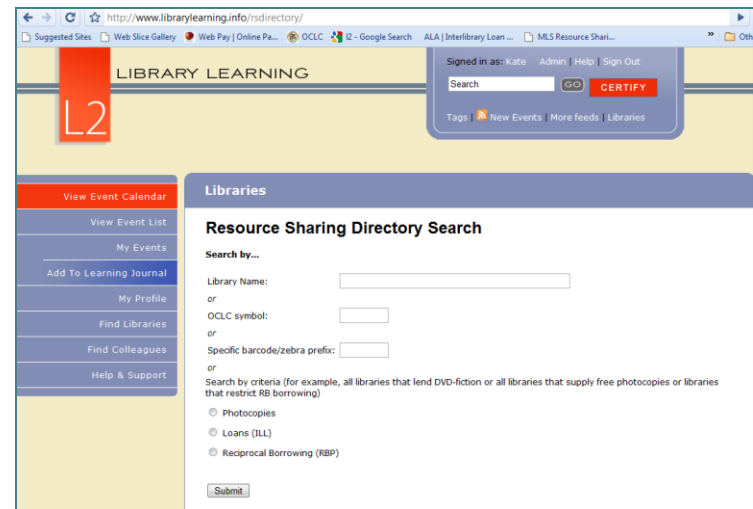
Accessing the Policy Directory

- Go to:
<http://www.librarylearning.info/libraries/>
- Click on Resource Sharing Policy Directory Search



OR go directly to :

<http://www.librarylearning.info/rsdirectory/>



You can search for a specific library

- By library name
- By OCLC symbol
- By barcode/zebra prefix number

Libraries

Resource Sharing Directory Search

Search by...

Library Name:

or

OCLC symbol:

or

Specific barcode/zebra prefix:

Search library name by keyword and click submit

Libraries

Resource Sharing Directory Search

Search by...

Library Name:

or

OCLC symbol:

or

Specific barcode/zebra prefix:

or

Search by criteria (for example, all libraries that lend DVD-fiction or all libraries that supply free photocopies or libraries that restrict RB borrowing)

- Photocopies
- Loans (ILL)
- Reciprocal Borrowing (RBP)

List of libraries will display

Libraries

Resource Sharing Directory Search Results

[New Search](#) [Display OCLC/ILL Symbols](#)

Metropolitan Library System

Library Name/Email	Contact	OCLC Symbol
Woodridge Public Library	Phone: 630.964.7899 ext. 250 Fax: 630.968.4126	HUO

If a library has not entered their policy yet, their name will not appear in the results set

Click on library name to view complete library policy

Libraries

Resource Sharing Directory

Woodridge Public Library

3 Plaza Drive
Woodridge, IL 60517-2099

ILDS Route: Metropolitan Library System [MLS]

SWAN - SWAN - System Wide Automation Network

Barcode/Zebra Label Prefix: 1524

ILL Phone & Fax Numbers

ILL Phone Number 630.964.7899 ext. 250

ILL Fax Number 630.968.4126

Loan Email wrs@mls.lib.il.us

Photocopies Email wrs@mls.lib.il.us

Reciprocal Access Contacts

Loans (Borrowing)

Pamela Whitt
pwhitt@woodridgelibrary.org
630.964.7899
630.964.0175 (fax)

Loans (Lending)

Pamela Whitt
pwhitt@woodridgelibrary.org
630.964.7899
630.964.0175 (fax)

Photocopies

Pamela Whitt
pwhitt@woodridgelibrary.org
630.964.7899
630.964.0175 (fax)

Reciprocal Borrowing

Julie Lombardo
jlombardo@woodridgelibrary.org
630.964.7899
630.964.0175 (fax)

Photocopy Policies

Policies are preceded by indicators: ✓ (Yes), ✗ (No), ? (Data Missing)

- ✓ Free photocopies?
- ✓ Express Copy Service (24 hour turnaround)?
- ✓ Call first for express service?
- ✓ Free express service?
- ✓ Fill requests via fax?
- ✗ Fill requests via email?
- ✓ LVIS Member?

Exposure/page limit: none

Charge for photocopies: 0

Charge for express service: 0

Loan Policies

- ✓ Participate in OCLC ILL?
- ✗ Use ILL management software (Clio, ILLIAD, Relais, etc.)?

ILL management software:

Policies are preceded by indicators: ✓ (Yes), ✗ (No), NA (Not owned in collection), ? (Data Missing)

Status Item Category

- NA Audiocassette - Music
- ✓ Audiocassette - Spoken Word
- ✓ Compact Disc - Music
- ✓ Compact Disc - Spoken Word

- NA Toy
- NA Art (framed art, sculpture, etc.)
- NA Graphic (posters)
- NA Government Document
- NA Dissertations
- ✓ Back Issues of Periodicals
- ✓ Genealogy Materials
- ✗ Reference Materials

Lost Material Replacement Cost: cost of the item on SWAN

Replacement Processing/Service Charge: \$5.00

Reciprocal Borrowing Policies

- ✓ Participate in reciprocal borrowing within your own library system?
- ✓ Participate in reciprocal borrowing outside of your library system?
- ✗ Place any restrictions on RBP patrons?

Limits on reciprocal borrowers:

ILL Lending & Borrowing Policy Documents

- [Interlibrary Loan Policy](#)

Search for a library policy by OCLC symbol

Libraries

Resource Sharing Directory Search

Search by...

Library Name:

or

OCLC symbol: ←

or

Specific barcode/zebra prefix:

or

Search by criteria (for example, all libraries that lend DVD-fiction or all libraries that supply free photocopies or libraries that restrict RB borrowing)

Photocopies

Loans (ILL)

Reciprocal Borrowing (RBP)

Click on library name to view policy

Libraries

Resource Sharing Directory Search Results

[New Search](#) [Display OCLC/ILL Symbols](#)

Metropolitan Library System

Library Name/Email	Contact	OCLC Symbol
Alsip-Merrionette Park Public Library District	Phone: 708.371.5666 Fax: 708.371.5672	JCF

Enter OCLC symbol, click submit

Search by barcode/zebra to route orphans home

Libraries

Resource Sharing Directory Search

Search by...

Library Name:

or

OCLC symbol:

or

Specific barcode/zebra prefix:

or

Search by criteria (for example, all libraries that lend DVD-fiction or all libraries that supply free photocopies or libraries that restrict RB borrowing)

- Photocopies
- Loans (ILL)
- Reciprocal Borrowing (RBP)

Libraries

Resource Sharing Directory Search Results

[New Search](#) [Display OCLC/ILL Symbols](#)

Metropolitan Library System

Library Name/Email	Contact	OCLC Symbol
Acorn Public Library District	Phone: 708.687.3780 ext. 231 Fax: 708.687.3712	TZ8

Click on library name to view ILDS route information at top of detail record

Libraries

Resource Sharing Directory

Acorn Public Library District

15624 South Central Avenue
Oak Forest, IL 60452-3204

ILDS Route: Metropolitan Library System [MLS]
SWAN - SWAN - System Wide Automation Network
Barcode/Zebra Label Prefix: 1804

- > [Search Resource Sharing policies](#)
- > [Library Directory Listing](#)
- > [Edit Resource Sharing policies](#)

Search for photocopy policies

To find all libraries in your system that supply free photocopies

- Click on Photocopies
- Choose library system
- Click “free photocopies”
- Click on “submit”

Search by criteria (for example, all libraries that lend DVD-fiction or all libraries that supply free photocopies or libraries that restrict RB borrowing)

Photocopies

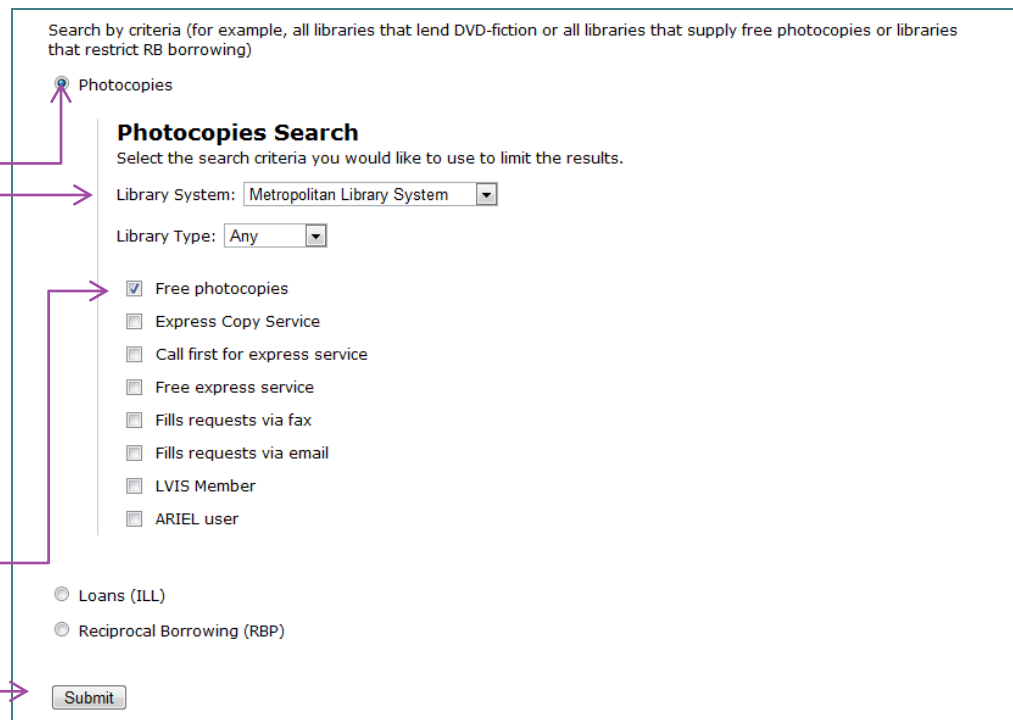
Photocopies Search
Select the search criteria you would like to use to limit the results.

Library System:

Library Type:

Free photocopies
 Express Copy Service
 Call first for express service
 Free express service
 Fills requests via fax
 Fills requests via email
 LVIS Member
 ARIEL user

Loans (ILL)
 Reciprocal Borrowing (RBP)

A screenshot of a library search interface. The interface is titled "Photocopies Search" and includes a search criteria section with a radio button selected for "Photocopies". Below this, there are two dropdown menus: "Library System" (set to "Metropolitan Library System") and "Library Type" (set to "Any"). A list of search criteria follows, with "Free photocopies" checked. At the bottom, there are radio buttons for "Loans (ILL)" and "Reciprocal Borrowing (RBP)", and a "Submit" button. Purple arrows from the text on the left point to the "Photocopies" radio button, the "Library System" dropdown, the "Free photocopies" checkbox, and the "Submit" button.

Policy Directory search results

Resource Sharing Directory Search Results

[New Search](#) [Display OCLC/ILL Symbols](#)

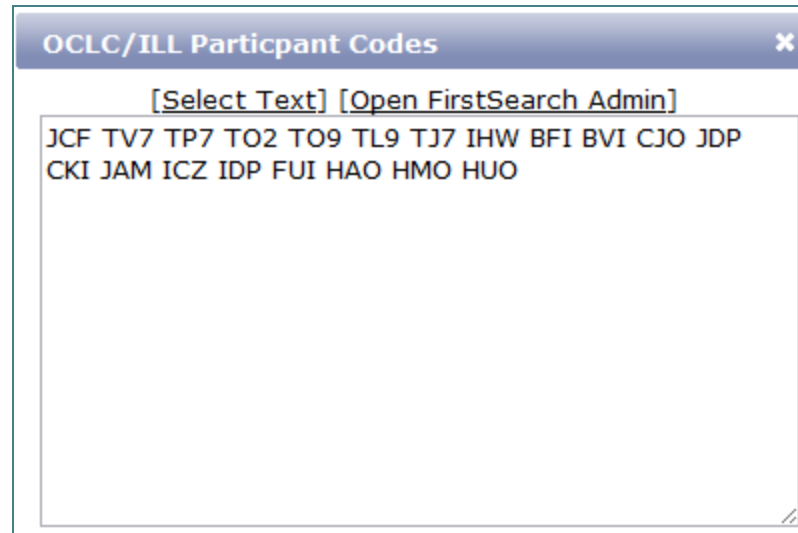
Metropolitan Library System

Library Name/Email	Contact	OCLC Symbol
Alsip-Merrionette Park Public Library District	Phone: 708.371.5666 Fax: 708.371.5672	JCF
Berwyn Public Library	Phone: 708.795.8000 ext. 3038 Fax: 708.795.8102	TV7
Eisenhower Public Library District	Phone: 708.867.7828 ext. 2237 Fax: 708.867.1535	TP7
Elmwood Park Public Library	Phone: 708.453.7645 Fax: 708.453.4671	TO2
Forest Park Public Library	Phone: 708.366.7171 ext. 106 Fax: 708.366.7293	TO9
Hinsdale Public Library	Phone: 630.986.1976 Fax: 630.986.9720	TL9
Indian Prairie Public Library District	Phone: 630.887.8760 ext. 226 Fax: 630.887.8801	TJ7
John G. Shedd Aquarium (Reference Library)	Phone: 312.692.3217 Fax:	IHW
LaGrange Public Library	Phone: 708.352.0576 ext. 13 Fax: 708.352.1620	BFI
Matteson Public Library	Phone: 708.748.4431 ext. 12 Fax: 708.748.0510	BVI
Melrose Park Public Library	Phone: 708.343.3391 ext. 7485 Fax: 708.531.5327	CJO
Metropolitan Library System (Burr Ridge)	Phone: 630.734.5160 Fax: 630.734.5050	JDP

Wonder
what
happens
if I click
here ?



Display OCLC/ILL Symbols



Did I hear someone say "Custom Holding Groups!"
just highlight text and copy into FS Admin

In a similar vein you can search for LVIS libraries in your system

To find all libraries in your system that are LVIS libraries

- Click on Photocopies
- Choose library system
- Click “LVIS member”
- Click on “submit”

Search by criteria (for example, all libraries that lend DVD-fiction or all libraries that supply free photocopies or libraries that restrict RB borrowing)

Photocopies

Photocopies Search
Select the search criteria you would like to use to limit the results.

Library System:

Library Type:

Free photocopies
 Express Copy Service
 Call first for express service
 Free express service
 Fills requests via fax
 Fills requests via email
 LVIS Member
 ARIEL user

Loans (ILL)
 Reciprocal Borrowing (RBP)

If you are an OCLC member and belong to LVIS you can create a custom holding path for free photocopies within your system


First you create two custom holdings groups

- One with the free photocopies result set
- One with the LVIS libraries result set

The screenshot displays the WorldCat Services Administrative Module interface. The top navigation bar includes links for Usage Statistics, WorldCat Services, WorldCat Registry, WorldCat.org, Administrative Module, and Policies Directory. The main header shows the WorldCat Services logo and the text 'ADMINISTRATIVE MODULE'. On the right side, there are links for Search Help, Comments, Site Map, Print Your Settings, and Exit. The left sidebar contains a menu with 'Resource Sharing' and 'Search Settings' tabs, and a sub-menu for 'Staff ILL Settings' with 'Custom Holdings Groups' selected. The main content area shows the breadcrumb 'Resource Sharing > Staff ILL Settings > Custom Holdings Groups' and a set of action buttons: View/Print, New Blank Record, Delete Record, Look Up Symbols, and Save Changes. Below this, there is a section for editing a specific Custom Holdings Group, including a dropdown for 'Group Name' and a text input for 'Custom Holdings Group OR enter an existing Group Name'. A 'Go' button is located below the input fields. The 'General Record Information' section includes a required field for 'Group Name', a 'Group Description' text area, and a section for 'Symbols to be added or removed' with 'Add Symbols' and 'Remove Symbols' buttons.

Custom holdings groups screen

Usage Statistics WorldCat Services WorldCat Registry WorldCat.org Administrative Module Policies Directory

 Search Help ?
Comments ?
Site Map ?
Print Your Settings ?
Exit ?

Resource Sharing Search Settings

Staff ILL Settings
Custom Holdings Groups

ILL Authorization: 100079428 | FirstSearch Authorization: None | Symbol: JDP

Resource Sharing > Staff ILL Settings > Custom Holdings Groups

View/Print New Blank Record Delete Record Look Up Symbols Save Changes

To edit a specific Custom Holdings Group:
Select Custom Holdings Group OR enter an existing Group Name

[View/Print Group Descriptions](#)

General Record Information

*Group Name:

Group Description:

Symbols to be added or removed:

Enter name of group, description, paste in OCLC symbols, click Add Symbols, and then Save Changes

WorldCat Services
ADMINISTRATIVE MODULE

Search Help ?
Comments ?
Site Map ?
Print Your Settings ?
Exit ?

Resource Sharing Search Settings

Staff ILL Settings
Custom Holdings Groups

ILL Authorization: 100079428 | FirstSearch Authorization: None | Symbol: JDP

Resource Sharing > Staff ILL Settings > Custom Holdings Groups

View/Print New Blank Record Delete Record Look Up Symbols Save Changes

To edit a specific Custom Holdings Group:
Select -Group Name- Custom Holdings Group OR enter an existing Group Name
Go

View/Print Group Descriptions

General Record Information

*Group Name: mlsfreep

Group Description: free photocopy suppliers in MLS

Symbols to be added or removed:
JCF JUN TW7 TV7 IAC TP7 IO2 TO9 TL9 TJ7 IHW BFI
BUO BVI BXI CJO JDP CKI JAM ICZ IDP FUI HAO
HMO HUO

Add Symbols
Remove Symbols

Create another group of the LVIS libraries call the group mslvis

WorldCat Services
ADMINISTRATIVE MODULE

Search Help ?
Comments ?
Site Map ?
Print Your Settings ?
Exit ?

Resource Sharing | Search Settings

Staff ILL Settings
Custom Holdings Groups ▾

ILL Authorization: 100079428 | FirstSearch Authorization: None | Symbol: JDP

Resource Sharing > Staff ILL Settings > Custom Holdings Groups

View / Print | New Blank Record | Delete Record | Look Up Symbols | Save Changes

To edit a specific Custom Holdings Group:
Select Custom Holdings Group OR enter an existing Group Name
Go

[View/Print Group Descriptions](#)

General Record Information

*Group Name:

Group Description:

Symbols to be added or removed:

JCF TV7 ICE TP7 TO2 TO9 TL9 TJ7 IHW BFI BNO BVI
CJO JDP CKI JAM ICZ IVJ IDP FUI HAO HMO HUO

You can now create a path for free photocopies in MLS

WorldCat Services
ADMINISTRATIVE MODULE

Comments
Site Map
Print Your Settings
Exit

Resource Sharing Search Settings

Staff ILL Settings
Custom Holdings Paths

ILL Authorization: 100079428 | FirstSearch Authorization: None | Symbol: JDP

Resource Sharing > Staff ILL Settings > Custom Holdings Paths

View/Print New Blank Record Delete Record Save Changes

To edit a specific Custom Holdings Path:

Select -Path Name- Custom Holdings Path OR enter an existing Path Name

Go

View/Print Path Descriptions

General Record Information

*Path Name: mlsfreep

Path Description: free photocopies in mls

Groups available to be included in the path:

- AVIN.....Known in state AV lenders
- AVOUT.....Known Out of State AV lenders
- GENEAIN.....Genealogy suppliers in state
- GENEAOUT.....Out of state Genealogy suppliers

Add Remove

Groups chosen to be included in the path:

- MLSFREE.....supplier of free photocopies in MLS
- MLSLVIS.....his suppliers in MLS

Up Down

- Create path name
- Enter description
- Highlight group on left
- Click Add button
- Order groups using “up” and “down” buttons
- Click “Save Changes”

Search the ILL policies

- From the directory search screen
- Click on Loans
- Choose the library system
- Click on format/category
- In this case DVD-fiction
 - Please note this is a category not supported by the OCLC ILL Policy Directory
 - Also many libraries have different policies for fiction and non-fiction AV
 - Many libraries circ AV within state, but not out of state

The screenshot shows a web form titled "Libraries" with a sub-header "Resource Sharing Directory Search". Under "Search by...", there are three input fields: "Library Name:", "OCLC symbol:", and "Specific barcode/zebra prefix:". Below these are radio buttons for "Photocopies" and "Loans (ILL)", with "Loans (ILL)" selected. A section titled "Loans (ILL) Search" contains a dropdown for "Library System" (set to "Metropolitan Library System"), another dropdown for "Library Type" (set to "Any"), and a checkbox for "Participates in OCLC ILL". Under "Specific item types:", there are checkboxes for "Audiocassette - Music", "Audiocassette - Spoken Word", "Compact Disc - Music", "Compact Disc - Spoken Word", "Blu-ray - Fiction", "Blu-ray - Non-fiction", and "DVD - Fiction", with "DVD - Fiction" checked.

Click the button at bottom of page

Libraries that supply DVD-fiction in MLS

View Event Calendar
View Event List
My Events
Add To Learning Journal
My Profile
Find Libraries
Find Colleagues
Help & Support

Libraries

Resource Sharing Directory Search Results

[New Search](#)
[Display OCLC/LL Symbols](#)

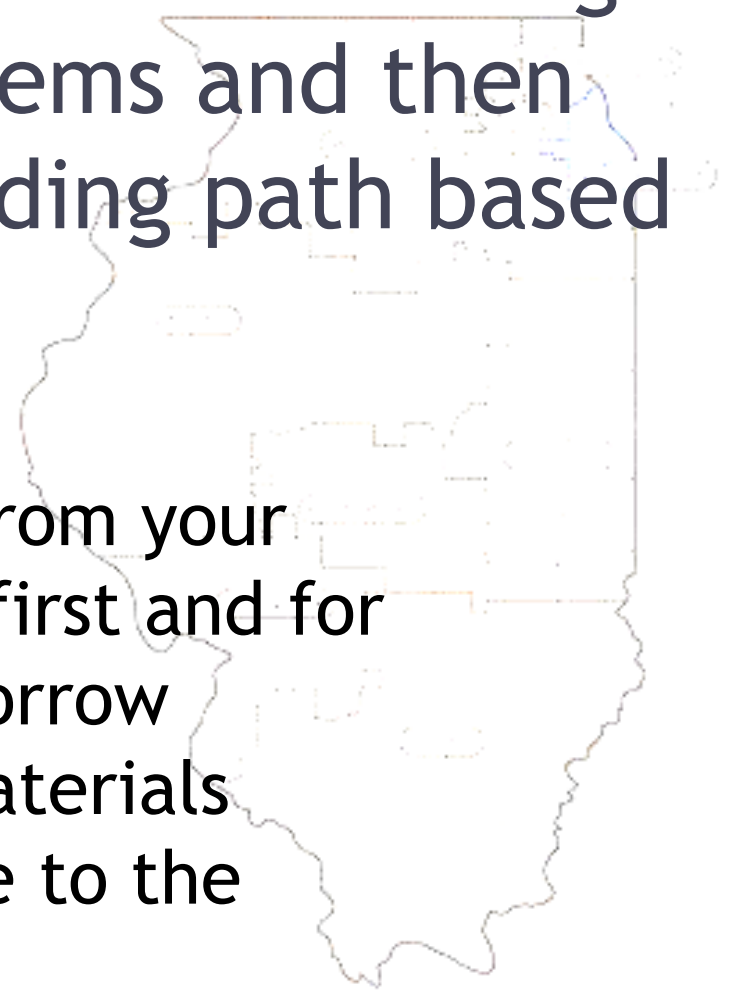
Metropolitan Library System

Library Name/Email	Contact	OCLC Symbol
Alsip-Merrionette Park Public Library District	Phone: 708.371.5666 Fax: 708.371.5672	JCF
Brother Rice High School	Phone: Fax:	
Eisenhower Public Library District	Phone: 708.867.7828 ext. 2237 Fax: 708.867.1535	TP7
Elmwood Park Public Library	Phone: 708.453.7645 Fax: 708.453.4671	TO2
Elmwood Park Unit District #401	Phone: 708.583.6441 Fax: 708.452.9504	
Forest Park Public Library	Phone: 708.366.7171 ext. 106 Fax: 708.366.7293	TO9
Hinsdale Public Library	Phone: 630.986.1976 Fax: 630.986.9720	TL9
Indian Prairie Public Library District	Phone: 630.887.8760 ext. 226 Fax: 630.887.8801	TJ7
LaGrange Public Library	Phone: 708.352.0576 ext. 13 Fax: 708.352.1620	BFI
Matteson Public Library	Phone: 708.748.4431 ext. 12 Fax: 708.748.0510	BVI
Maywood Public Library District	Phone: 708.343.1847 ext. 19 Fax: 708.343.2115	BXI
Melrose Park Public Library	Phone: 708.343.3391 ext. 7485 Fax: 708.531.5327	CJO
Midlothian Public Library	Phone: 708.535.2027 Fax: 708.535.2053	CKI
Moraine Valley Community College (Library)	Phone: 708.974.5709 Fax: 708.974.1184	JAM
Palos Heights Public Library	Phone: Fax:	DZI
Pritzker Military Library	Phone: 312.587.0234 Fax: 12.587.0536	
River Forest Public Library	Phone: 708.366.5205 ext. 316 Fax: 708.366.9031	FUI
Summit Public Library District	Phone: 708.458.1545 Fax: 084.581.842	GOY
Thomas Ford Memorial Library	Phone: 708.246.0520 Fax: 708.246.0403	HAO
Westchester Public Library	Phone: 708.562.3573 Fax: 708.562.1298	HMO
Woodridge Public Library	Phone: 630.964.7899 ext. 250 Fax: 630.968.4126	HUO

© 2009 | [About](#) | [Calendar](#) | [Policy](#) | [Contact Us](#)

What about creating custom holdings groups for all the systems and then creating a custom holding path based on geography

It makes sense to request from your system member libraries first and for loans it makes sense to borrow locally before shipping materials from one part of the state to the other



Search the reciprocal borrowing policies for libraries that do not participate outside of own system

Libraries

Resource Sharing Directory Search

Search by...

Library Name:

or

OCLC symbol:

or

Specific barcode/zebra prefix:

or

Search by criteria (for example, all libraries that lend DVD-fiction or all libraries that supply free photocopies or libraries that restrict RB borrowing)

Photocopies

Loans (ILL)

Reciprocal Borrowing (RBP)

Reciprocal Borrowing (RBP) Search

List public libraries that

do not participate in RBP within their own system.

do not participate in RBP outside their own system.

have no RBP limits.

OR

show RBP limitations, by selecting the library system

Library System:

View Event List
My Events
Add To Learning Journal
My Profile
Find Libraries
Find Colleagues
Help & Support

Resource Sharing Directory Search Results

[New Search](#) [Display OCLC/ILL Symbols](#)

DuPage Library System

Library Name/Email	Contact	RBP Limits
DuPage Library System	Phone: 630.232.8457 ext. 213 Fax: 630.232.0699	

Metropolitan Library System

Library Name/Email	Contact	RBP Limits
Brother Rice High School	Phone: Fax:	
Concordia University Chicago (Klinck Memorial Library)	Phone: 708.209.3057 Fax: 708.209.3176	We only Circulate to Oak Park and River Forest Residents. Limit Restriction to books only, not AV.
Elmhurst Memorial Healthcare (Marquardt Memorial Library)	Phone: 630.833.1400 ext. 44901 Fax: 630.782.7834	
Elmwood Park Unit District #401	Phone: 708.583.6441 Fax: 708.452.9504	
Immaculate Conception High School (Library)	Phone: Fax:	
John G. Shedd Aquarium (Reference Library)	Phone: 312.692.3217 Fax:	
Metropolitan Library System (Burr Ridge)	Phone: 630.734.5160 Fax: 630.734.5050	
Moraine Valley Community College (Library)	Phone: 708.974.5709 Fax: 708.974.1184	Books Only
Pritzker Military Library	Phone: 312.587.0234 Fax: 12.587.0536	

North Suburban Library System

Library Name/Email	Contact	RBP Limits
Des Plaines Community Consolidated School District #62 (Orchard Place Elementary School)	Phone: Fax:	

© 2009 | About | Calendar | Policy | Contact Us

RBP search results
Libraries that
don't
participate in
RB outside of
their system

Libraries

Resource Sharing Directory Search

Search by...

Library Name:

or

OCLC symbol:

or

Specific barcode/zebra prefix:

or

Search by criteria (for example, all libraries that lend DVD-fiction or all libraries that supply free photocopies or libraries that restrict RB borrowing)

- Photocopies
- Loans (ILL)
- Reciprocal Borrowing (RBP)

Reciprocal Borrowing (RBP) Search

List public libraries that

- do not participate in RBP within their own system.
- do not participate in RBP outside their own system.
- have no RBP limits.

OR

- show RBP limitations, by selecting the library system

Library System:

Submit

Show RBP limits by system

Displays a list of limits for RBP within a particular library system

LIBRARY LEARNING

L2

Signed in as: Kate Admin Help Sign Out

Search GO CERTIFY

Tags: New Events More Feeds Libraries

View Event Calendar

View Event List

My Events

Add To Learning Journal

My Profile

Find Libraries

Find Colleagues

Help & Support

Libraries

Resource Sharing Directory Search Results

[New Search](#) [Display OCLC/ILL Symbols](#)

Metropolitan Library System

Library Name/Email	Contact	RBP Limits
Aliso-Memorette Park Public Library District	Phone: 708.371.5666 Fax: 708.371.5672	RB patrons are restricted to borrowing only in-house materials. We do not place holds on items at other libraries. We do not do any interlibrary loan for RB patrons.
Bedford Park Public Library District	Phone: 708.458.6826 Fax: 708.458.9827	new items are loaned after 3 months
Berwyn Public Library	Phone: 708.795.8000 ext. 3038 Fax: 708.795.8102	cannot borrow fiction videos or dvds cannot renew items
Concordia University Chicago (Clintock Memorial Library)	Phone: 708.209.3057 Fax: 708.209.3176	We only Circulate to Oak Park and River Forest Residents. Limit Restriction to books only, not AV.
Eisenhower Public Library District	Phone: 708.867.7828 ext. 2237 Fax: 708.867.1535	Reciprocal borrowers cannot borrow our console games.
Elmwood Park Public Library	Phone: 708.453.7645 Fax: 708.453.4671	RB patrons are charged \$1.00 per video/dvd. No rental DVDs or roaming TV collection DVDs are circulated to RB.
Field Museum of Natural History (Library)	Phone: 312.665.7886 Fax: 312.665.7893	The Field Museum Library provides loans and free copies to all Illinois university and research libraries. Unfortunately, we cannot supply materials to public libraries.
Lisle Library District	Phone: 630.971.1675 Fax: 630.971.1701	No new DVD releases No MAPP passes Cannot place holds on our materials Cannot request materials through ILL
Matteson Public Library	Phone: 708.748.4431 ext. 12 Fax: 708.748.0510	All patrons are limited to a total of 50 items altogether, checked out and on hold.
Midlothian Public Library	Phone: 708.535.2027 Fax: 708.535.2053	Same as our patrons unless their home library has stricter limits. Exception is the Museum Pass available to Midlothian Cardholders only. 1. Three (3) non-fiction books on any one subject which is in demand. 2. Five (5) AV materials of any one format, except for DVDs (i.e. 5 videocassettes, 5 compact discs, 5 audio book titles). 3. DVDs are limited to four (4) per family. 4. Ten (10) magazines per patron 5. There is a limit of one (1) museum pass per family for Midlothian Cardholders only. 6. Juvenile patrons (age 17 or younger) must be accompanied by a parent or guardian in order to checkout videos or DVDs.
Moraine Valley Community College (Library)	Phone: 708.974.5709 Fax: 708.974.1184	Books Only
North Park University (Brandel Library)	Phone: 773.244.5588 Fax: 773.244.4891	Curriculum materials are not loaned.
Oak Lawn Public Library	Phone: 708.422.4990 ext. 120 Fax: 708.422.5061	We do not place holds for RBP. AV limits apply (same as Oak Lawn patrons)
Prairie State College (Library)	Phone: 708.709.3553 Fax: 708.709.3940	Limit of 5 items per patron, 21 day loan with one renewal.
River Forest Public Library	Phone: 708.366.5205 ext. 316 Fax: 708.366.9031	Reciprocal borrowers are restricted by the home library's loan rules. River Forest does not circulate iPods or Kindles to reciprocal borrowers.
Westchester Public Library	Phone: 708.562.3573 Fax: 708.562.1208	Reciprocal borrowers must present a valid library card; status of non-Swan library cards will be verified with their home library before granting borrowing privileges.

© 2009 | About | Calendar | Policy | Contact Us

RBP limitations

The interesting world of RBP

Non OCLC participants discussion

- How does the directory assist you?
 - You can print out results list by category/format
 - Any results you could copy and paste results into a Word document and then sort alphabetically
 - You can search the directory for RBP patrons before sending them to another library
 - You can identify free suppliers of photocopies

OCLC participants

- Custom holdings groups
 - Photocopies: free suppliers
 - Photocopies: LVIS libraries
 - Photocopies: fill copies via email or fax
 - Photocopies: ARIEL libraries
 - Loans: By format, by system
 - Loans: By system, by type
- Custom holdings paths
 - Photocopies: Free copies
 - Loans: by format and geographically by system

For a more detailed explanation of OCLC custom holding groups and paths

- View an OCLC tutorial

<http://www.oclc.org/us/en/support/documentation/resourcesharing/customholdings/tutorial.htm>

Other ideas

Send your suggestions for enhancements to:

Kate Boyle

Metropolitan Library System

125 Tower Drive

Burr Ridge, IL 60527

Phone: 630-734-5160

Email: boylek@mls.lib.il.us